

Heavy Clouds
Big City



July 7-8, 2010
Almost 11" rain

1 mile X 10 miles = 6400 acres

1 acre-foot of water = 325,851 gallons

gallons in 6400 acres = 2.085 billion

8 pounds per gallon

16.7 billion pounds = almost 9 million tons

He wraps up the waters in his clouds,
yet the clouds do not burst under their weight.

Job 26: 8

Do you know how the clouds hang poised,
those wonders of him who is perfect in knowledge?

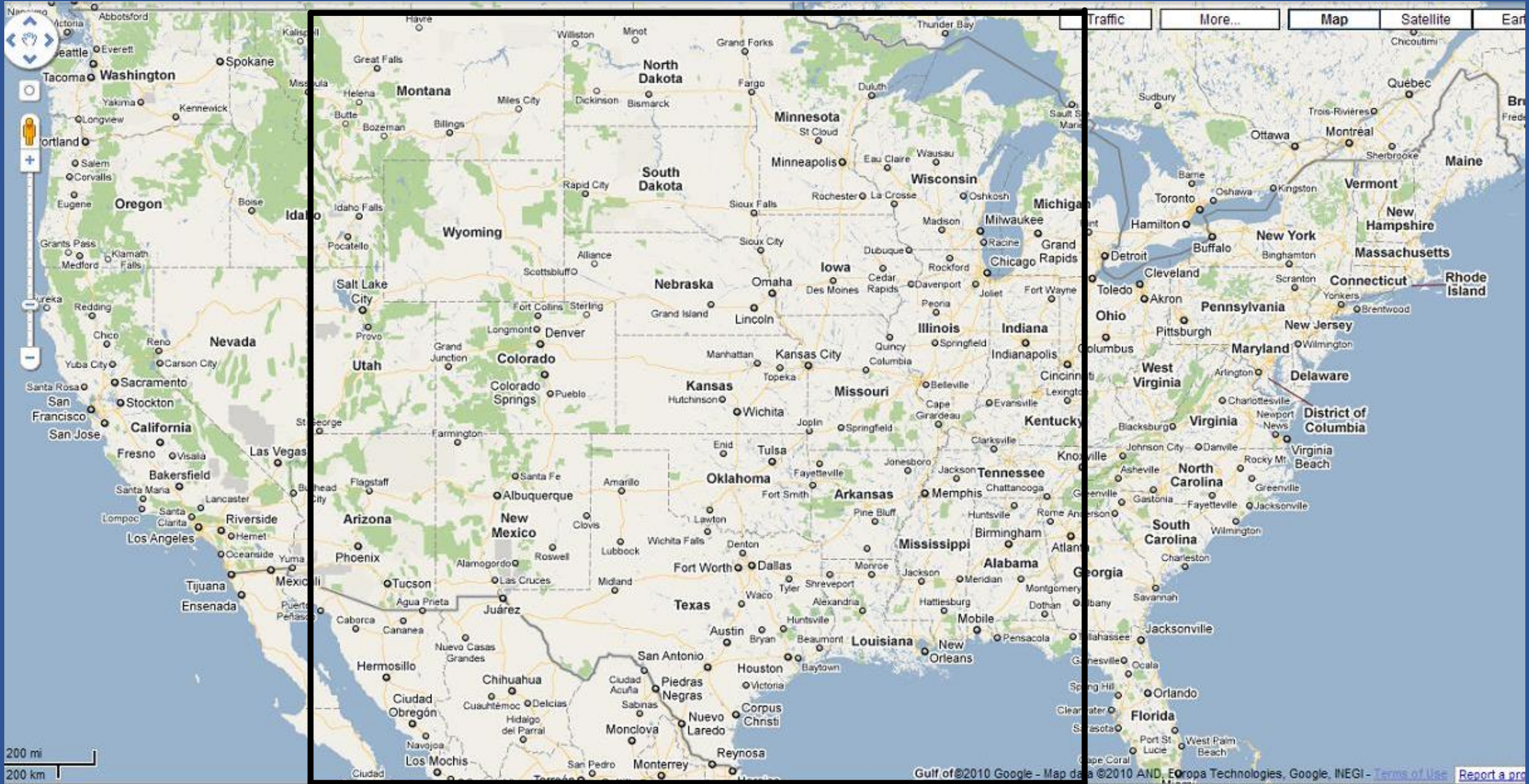
Job 37: 16

The angel speaking with me had a gold measuring-rod with which to measure the city,
its gates and its wall.

The city is laid out in a square, its length equal to its width. With his rod he measured the city at
1,500 miles, *
with length, width and height the same.

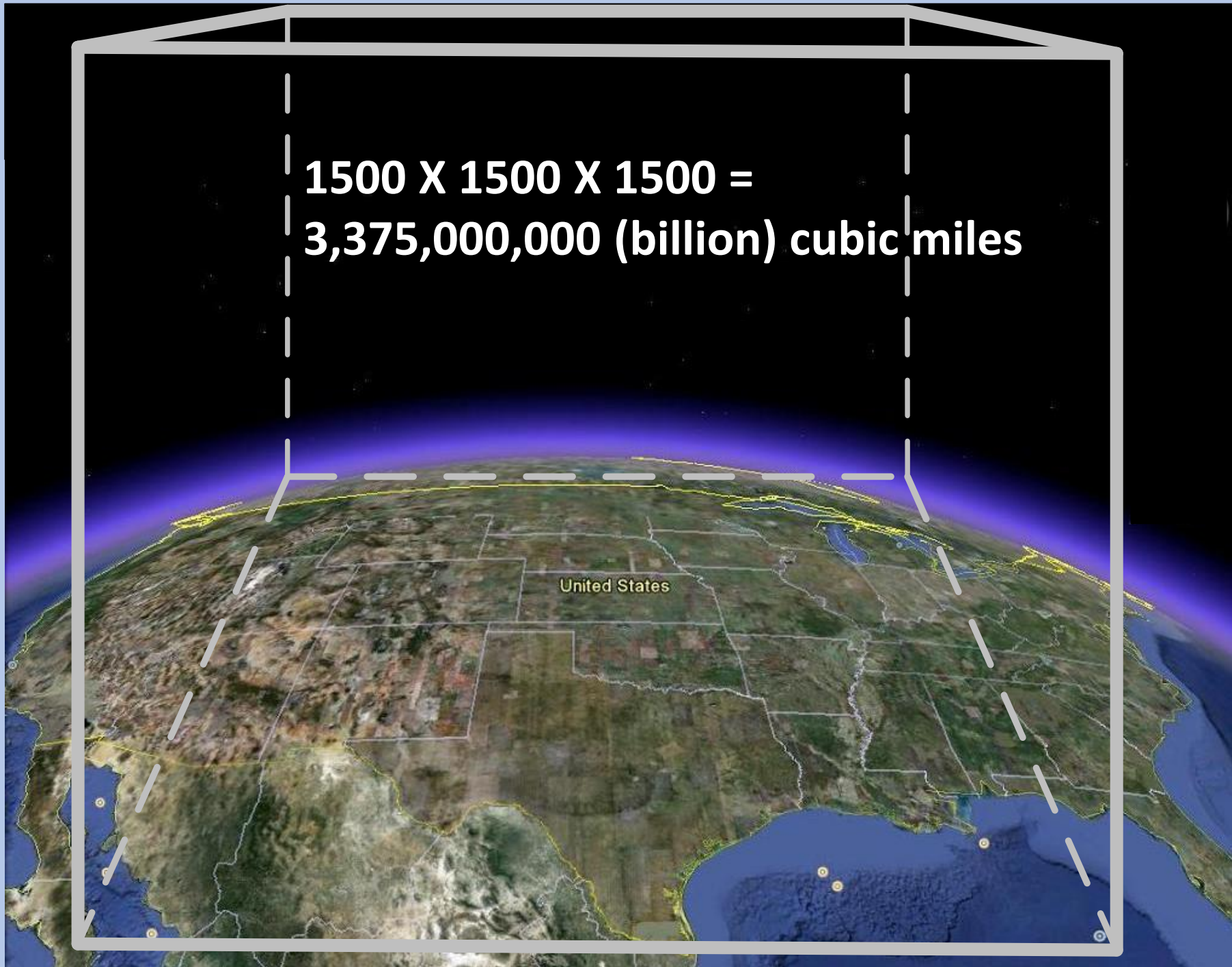
Rev 21:15-16 CJB

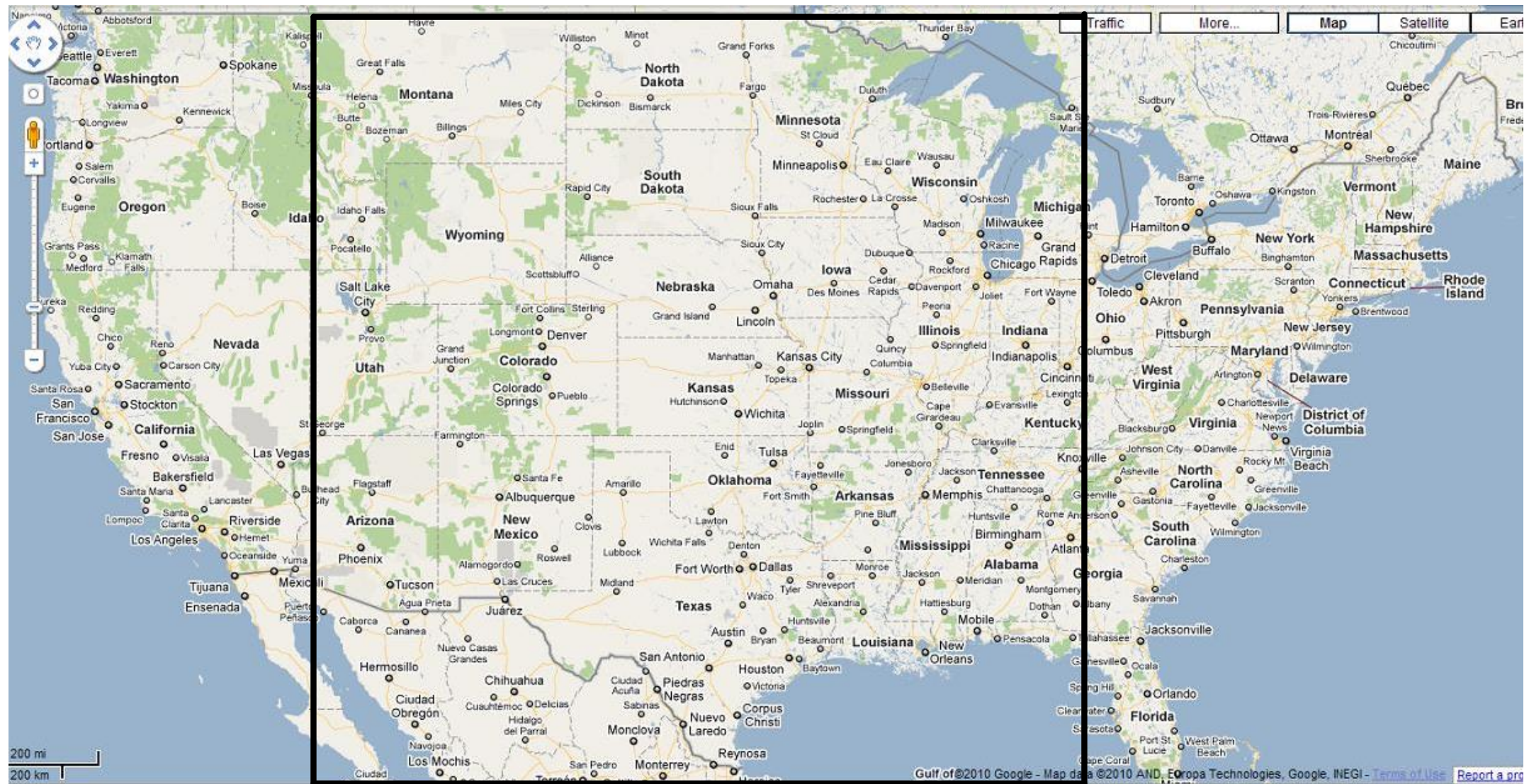
* stadia, furlongs, 1400 miles



1500 X 1500 = 2,250,000 (million) square miles

**1500 X 1500 X 1500 =
3,375,000,000 (billion) cubic miles**

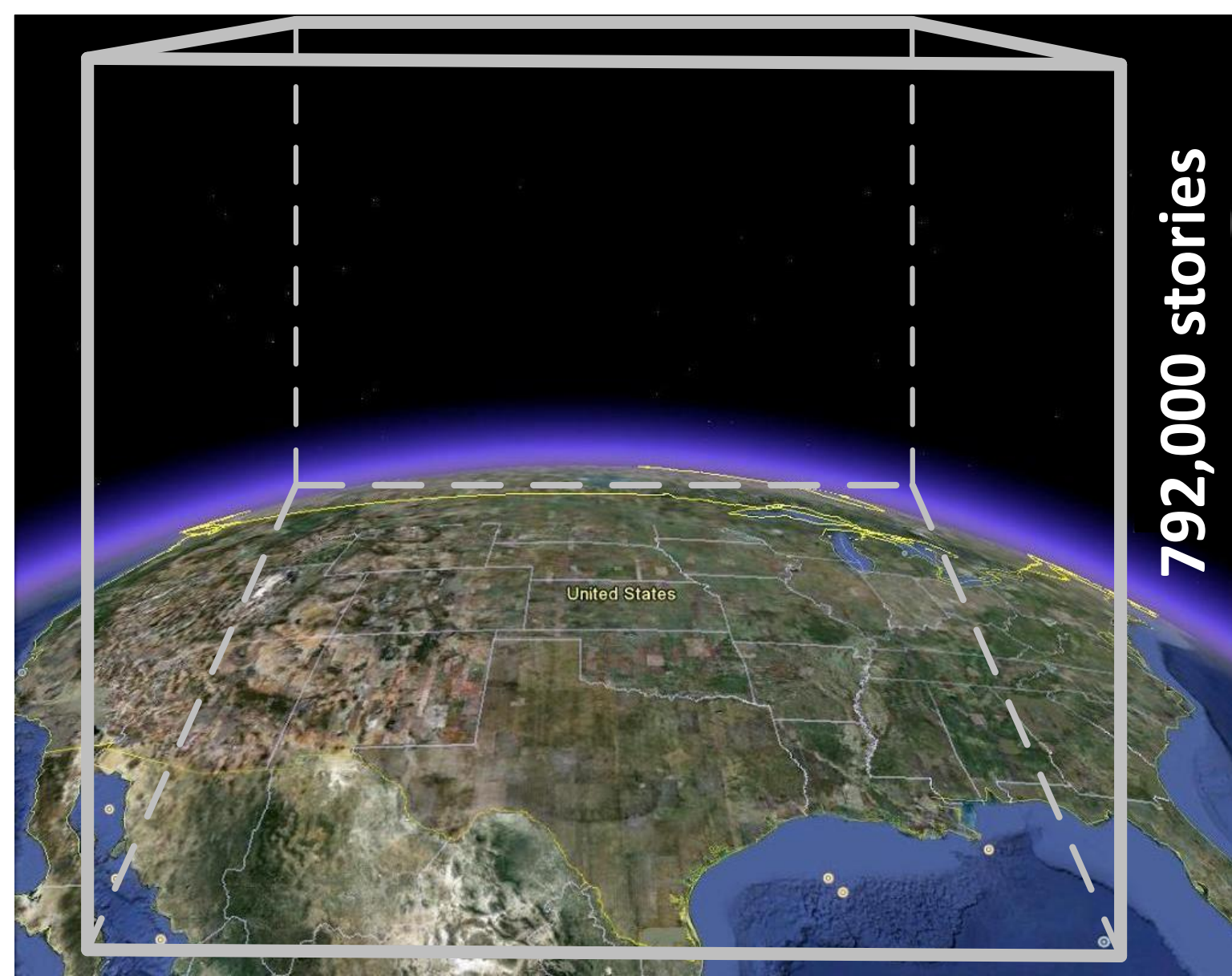




5280 X 5280 = 27,878,400 (million) square feet in a square mile

1500 X 1500 X 27,878,400 = 62,726,400,000,000 (trillion) square feet in 1500 square miles

6,272,640,000 (billion) people in 1500 square miles = 10,000 square feet per person



792,000 stories

1 mile = 5,280 feet /
10 feet per floor =
528 floors per mile
X 1500 miles =
792,000 floors

6,272,640,000 (billion) people in 1500 square miles (one floor) X 792,000 floors
4,967,930,880,000,000 (quadrillion) people in 792,000 floors (10,000 sq ft per person)

How Many People Have Ever Lived On Earth?

Year	Population	Births per 1,000	Births Between Benchmarks
50,000 B.C.	2	-	-
8000 B.C.	5,000,000	80	1,137,789,769
1 A.D.	300,000,000	80	46,025,332,354
1200	450,000,000	60	26,591,343,000
1650	500,000,000	60	12,782,002,453
1750	795,000,000	50	3,171,931,513
1850	1,265,000,000	40	4,046,240,009
1900	1,656,000,000	40	2,900,237,856
1950	2,516,000,000	31-38	3,390,198,215
1995	5,760,000,000	31	5,427,305,000
2002	6,215,000,000	23	983,987,500

Number who have ever been born	106,456,367,669
World population in mid-2002	6,215,000,000
Percent of those ever born who are living in 2002	5.8

~ 110 billion

497 quintillion cubic feet in 1500 mile cube

Divided by 110,000,000,000 (billion) people ever lived (est)

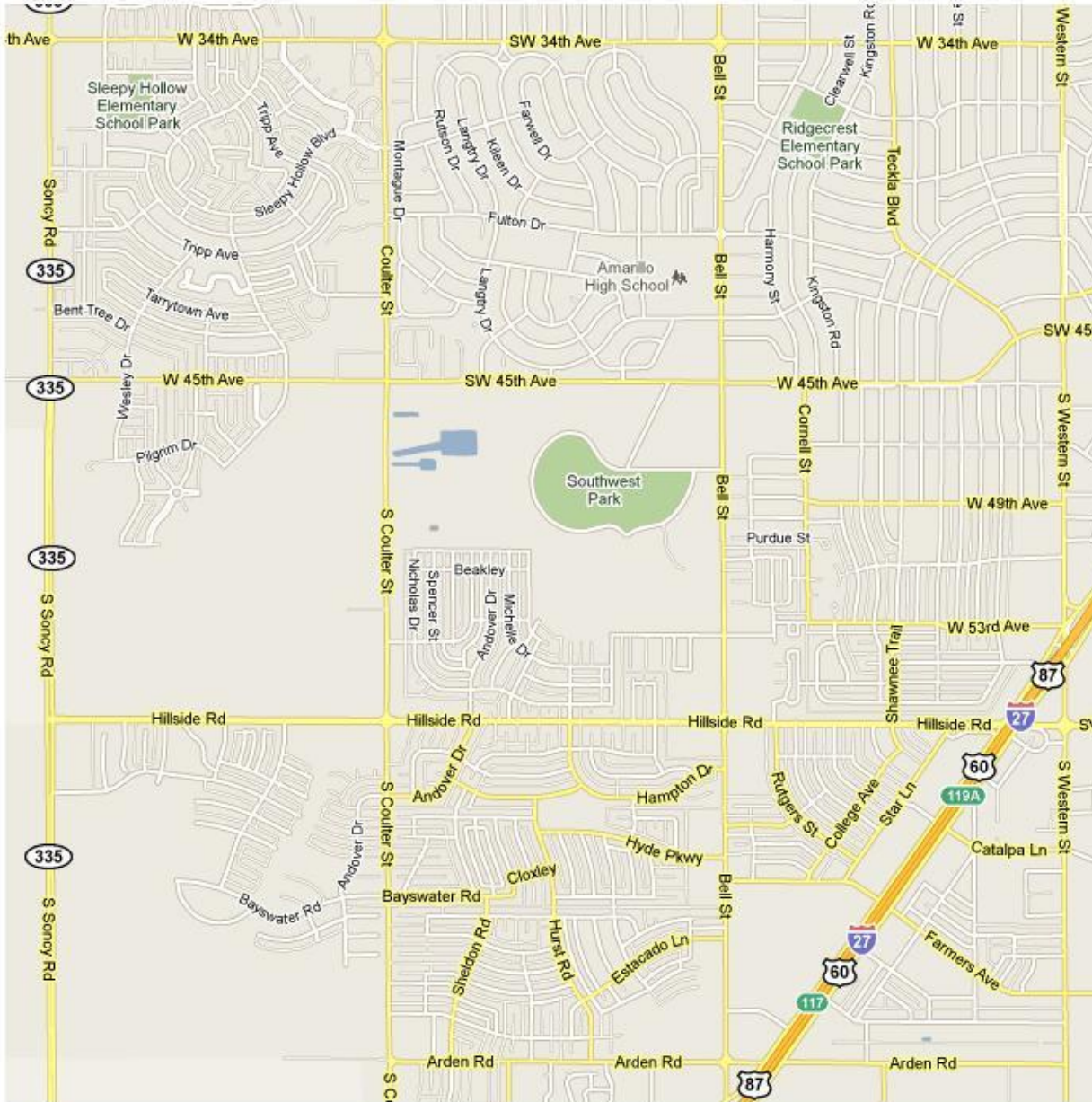
4,516,300,800 (billion) cubic feet per person

(1650 X 1650 X 1650 foot cube)

3 miles X 3 miles X 20 feet high = approx 5 billion cubic feet per person

34 th Ave

SONCY



ARDEN RD

WESTERN

**3 miles X 3 miles X 20 feet high
For *each* of 110 billion people**

He said to me: "It is done. I am the Alpha and the Omega, the Beginning and the End. To him who is thirsty I will give to drink without cost from the spring of the water of life. He who overcomes will inherit all this, and I will be his God and he will be my son.

But the cowardly, the unbelieving, the vile, the murderers, the sexually immoral, those who practice magic arts, the idolaters and all liars — their place will be in the fiery lake of burning sulfur. This is the second death."

Revelation 21: 7-8

"No eye has seen,
no ear has heard,
no mind has conceived
what God has prepared
for those who love him"

1 Corinthians 2: 9

And if Christ has not been raised,
your faith is futile.

But Christ has indeed been raised
from the dead, the firstfruits...

HE IS RISEN!

HE IS RISEN INDEED!